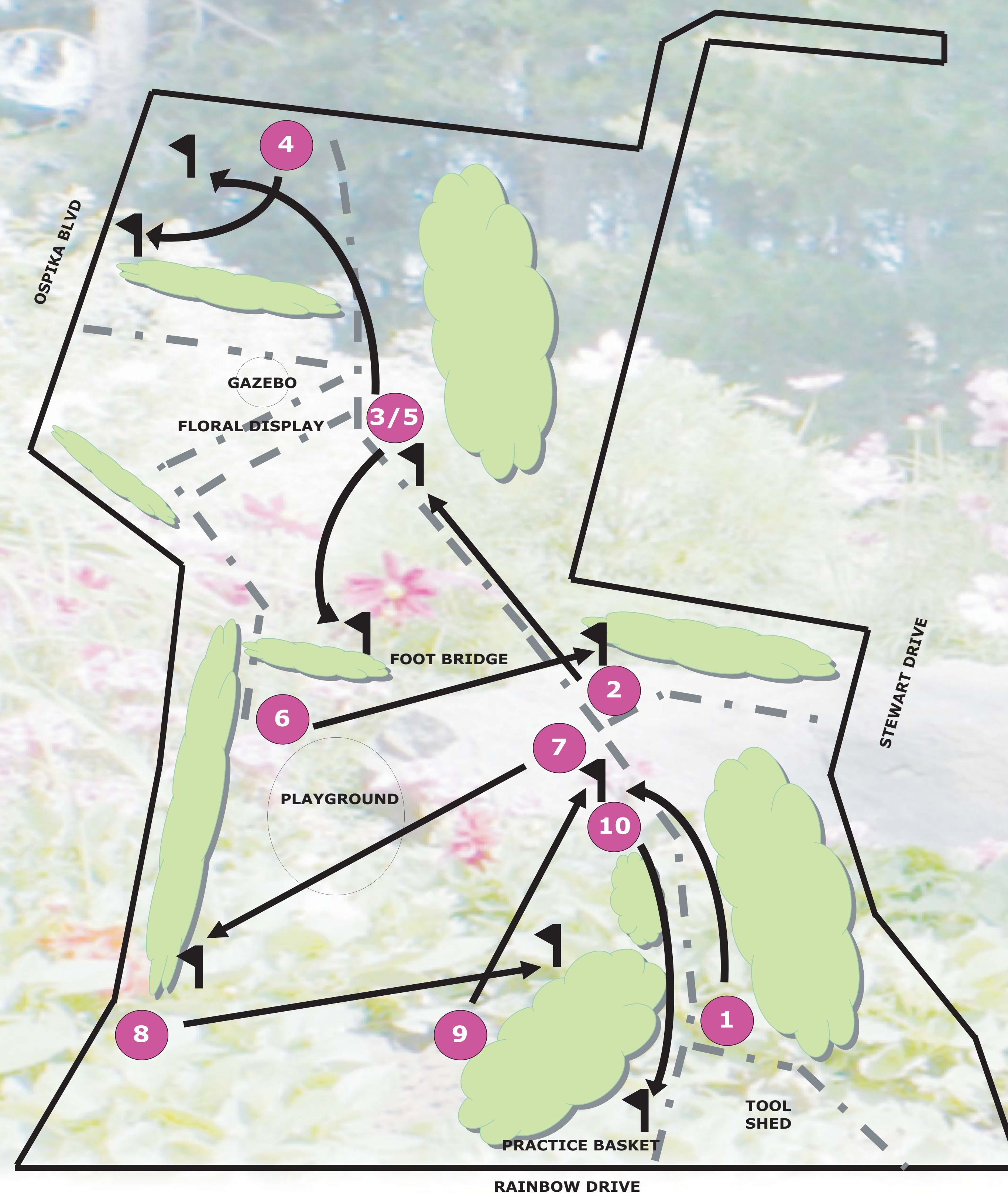


# Welcome to Rotary Disc Golf



Rotary Disc Golf has been made possible by:



ROTARY CLUB  
OF  
PRINCE GEORGE



To learn more about Disc Golf visit:  
[www.bcdss.com](http://www.bcdss.com)

Disc Golf is just like golf, only with a disk rather than a ball. One point is counted each time the disc is thrown. The lowest score wins!

Begin at the first tee box. Do not throw until the players in front of you are out of range.

Mark where your disk lands by either turning the disk over or use another disk, now throw again.

The player that lands the farthest away always throws first.

The player with the least amount of throws on the previous hole is the first to tee off on the next throw.

Fairway throws must be made with the foot closest to the hole on the lie. The other foot may be no closer to the hole than the lie. A run-up and normal follow-through, after release, is allowed.

You are successful at each hole when your disc is in the basket.

**PARK USERS HAVE THE RIGHT OF WAY! Do not throw if there is a chance of an errant disc hitting anyone. Wait until all is clear or send out a spotter.**

**Do not stomp on bushes, trees or floral displays.**

**Use trash receptacles.**

**Leave your dog at home. Rainbow Park is a "No Dog Park".**