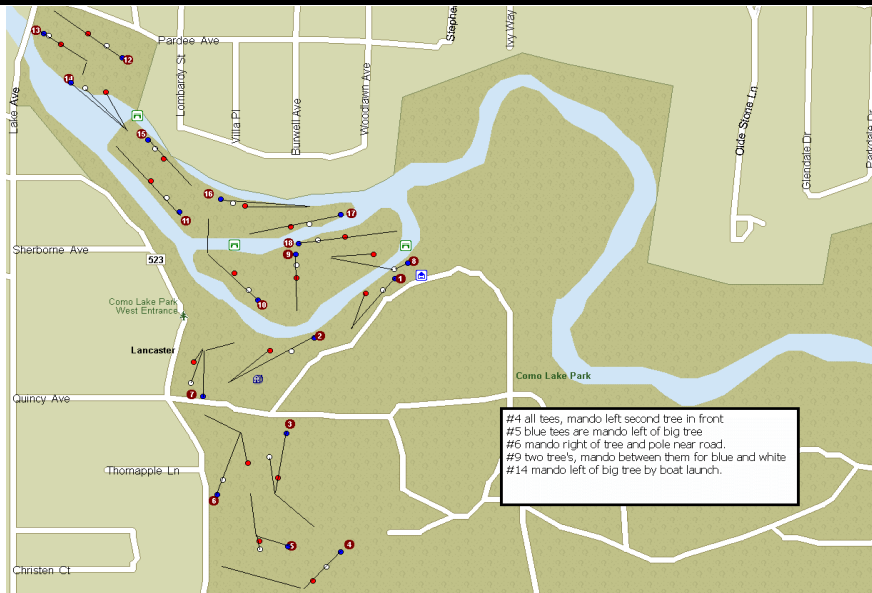


HOLE	1	2	3	4	5	6	7	8	9	OUT	10	11	12	13	14	15	16	17	18	IN	TOT	HCP	NET	
BLUE TEES	465	460	445	310	265	372	480	471	340	3608	634	445	550	365	306	375	450	420	440	3985	7593			
WHITE TEES	397	385	375	250	240	271	410	437	290	3055	558	365	420	325	270	320	350	300	320	3228	6283			
RED TEES	325	295	295	190	190	245	330	200	220	2290	454	300	300	255	195	240	250	200	230	2424	4714			
PAR	4	4	4	3	3	4	5	3	4	34	5	5	4	4	4	4	4	4	4	38	72			
PLAYER 1																								
PLAYER 2																								
PLAYER 3																								
PLAYER 4																								
PLAYER 5																								
RULES OF PLAY AND ETIQUETTE	GENERAL PLAY: Tee shots must be relesef from behind the front of the tee blocks. Subsequent shots must be played from directly under the spot wher a disc comes to rest. A thrower may follow through unless 10m (33') from basket. Shots less than 10m from the basket are considered "putts." A player must demonstrate balance after throwing a putt before moving forward of his lie.										FREE RELIEF: A disc landing in the stream from holes 3-7 or in any casual water on the course may be moved to the nearest dry location no closer to the hole. Discs landing less than 1m from an O.B. line may be moved 1m in from it. No penalty.										WON + LOST - HALVED O DATE: _____ SCORER: _____ ATTEST: _____			
	OUT OF BOUNDS: A disc is out of bounds if it comes to rest on or across any road, in the stream behind hole 2, or any part of the lake / stream on the final 8 holes. Take relief 1m (3') from the point where the disc went O.B., with one stroke penalty.										ETIQUETTE: Wait until players ahead are out of range before throwing. Be courteous to other players and visitors of the park. Allow faster groups to play through. Please do not litter. Have fun!													

HOLE	1	2	3	4	5	6	7	8	9	OUT	10	11	12	13	14	15	16	17	18	IN	TOT	HCP	NET	
BLUE TEES	465	460	445	310	265	372	480	471	340	3608	634	445	550	365	306	375	450	420	440	3985	7593			
WHITE TEES	397	385	375	250	240	271	410	437	290	3055	558	365	420	325	270	320	350	300	320	3228	6283			
RED TEES	325	295	295	190	190	245	330	200	220	2290	454	300	300	255	195	240	250	200	230	2424	4714			
PAR	4	4	4	3	3	4	5	3	4	34	5	5	4	4	4	4	4	4	4	38	72			
PLAYER 1																								
PLAYER 2																								
PLAYER 3																								
PLAYER 4																								
PLAYER 5																								
RULES OF PLAY AND ETIQUETTE	GENERAL PLAY: Tee shots must be relesef from behind the front of the tee blocks. Subsequent shots must be played from directly under the spot wher a disc comes to rest. A thrower may follow through unless 10m (33') from basket. Shots less than 10m from the basket are considered "putts." A player must demonstrate balance after throwing a putt before moving forward of his lie.										FREE RELIEF: A disc landing in the stream from holes 3-7 or in any casual water on the course may be moved to the nearest dry location no closer to the hole. Discs landing less than 1m from an O.B. line may be moved 1m in from it. No penalty.										WON + LOST - HALVED O DATE: _____ SCORER: _____ ATTEST: _____			
	OUT OF BOUNDS: A disc is out of bounds if it comes to rest on or across any road, in the stream behind hole 2, or any part of the lake / stream on the final 8 holes. Take relief 1m (3') from the point where the disc went O.B., with one stroke penalty.										ETIQUETTE: Wait until players ahead are out of range before throwing. Be courteous to other players and visitors of the park. Allow faster groups to play through. Please do not litter. Have fun!													

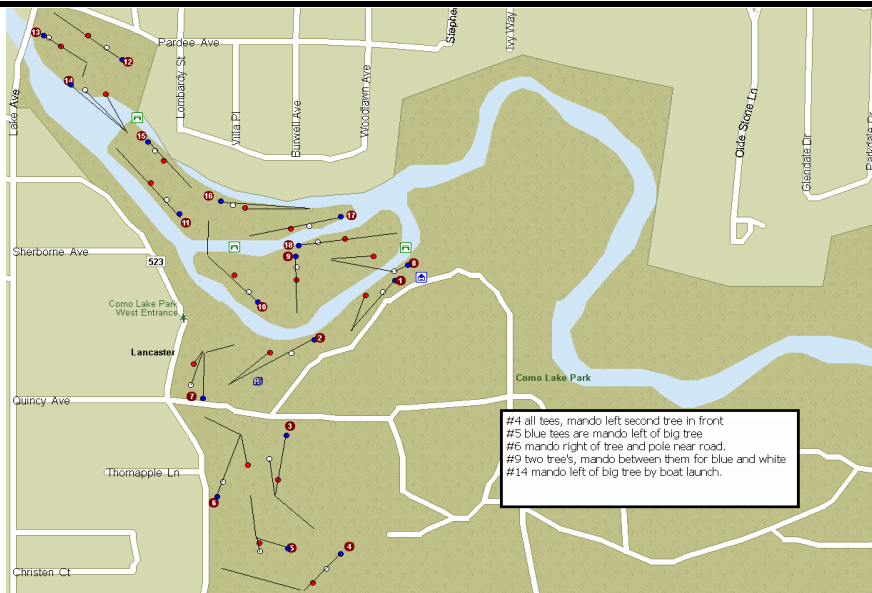


#4 all tees, mando left second tree in front
 #5 blue tees are mando left of big tree
 #6 mando right of tree and pole near road.
 #9 two tree's, mando between them for blue and white
 #14 mando left of big tree by boat launch.

For additional scorecards as well as course,
 league and tournament info, see <http://nrdg.net>

NIAGARA REGION
DISC GOLF

The Lighthouse Disc Golf Course @ Como Lake Park



#4 all tees, mando left second tree in front
 #5 blue tees are mando left of big tree
 #6 mando right of tree and pole near road.
 #9 two tree's, mando between them for blue and white
 #14 mando left of big tree by boat launch.

For additional scorecards as well as course,
 league and tournament info, see <http://nrdg.net>

NIAGARA REGION
DISC GOLF

The Lighthouse Disc Golf Course @ Como Lake Park

