

# DAVE CHAMBERLIN



**MCKAILA DORMAN**

**SARAH NELSON**



## RW FRENCH INC

### PENDARIES WOMEN'S GOLF ASSOCIATION



**SQUID**



## Welcome to the Pendaries Village Open!

### Schedule of Events

Time	Event	Location
<u>Friday, October 25</u>		
2:00-4:00 Flex Start	Bring your partner Doubles	Course
	\$30 pro \$20 am \$20 mixed	
5:00-7:00pm	Check In	Community Center
<u>Saturday, October 26</u>		
7:30-8:00am	Late Check In	Course
8:15am	Players Meeting	Course
8:45am	Round 1 Shotgun Start	Course
12:00pm	Lunch provided	Community Center
1:15pm	Round 2 Shotgun Start	Course
8:00pm	Raffle, players party.	Community Center
8:30pm	Putting contest sponsored by NMDG.org	Pendaries Bar
<u>Sunday, October 27</u>		
9:30am	Players Meeting	Course
10:00am	Round 3 Shotgun Start	Course
2:00pm	Awards	Community Center

### General Rules

- All Greens are out of bounds. Greens are defined as the putting surface for the ball golf course which is the shortest cut of grass. If disc comes to rest on the green, play at the point where it entered the green with a one stroke penalty.
- Repair any marks that your disc may make on the greens
- Two Meter Rule is in effect
- Please limit searching for lost discs to three minutes! If three minutes have elapsed and the disc has not been found, proceed to the spot of the previous shot and rethrow with a one stroke penalty. If the lost disc is on a drive, you must re-tee.

### PENDARIES MEN'S GOLF ASSOCIATION



Hole #1 Par 4  
793ft  
528ft

Water is OB including ditch that connects to pond that is marked with string.. If drive lands OB in pond short of bridge, proceed to drop zone at short tee. If drive lands in any other OB, play at point where the disc went out. Cart path on left side of fairway after marked line is OB. Cart path on right side of fairway is OB.



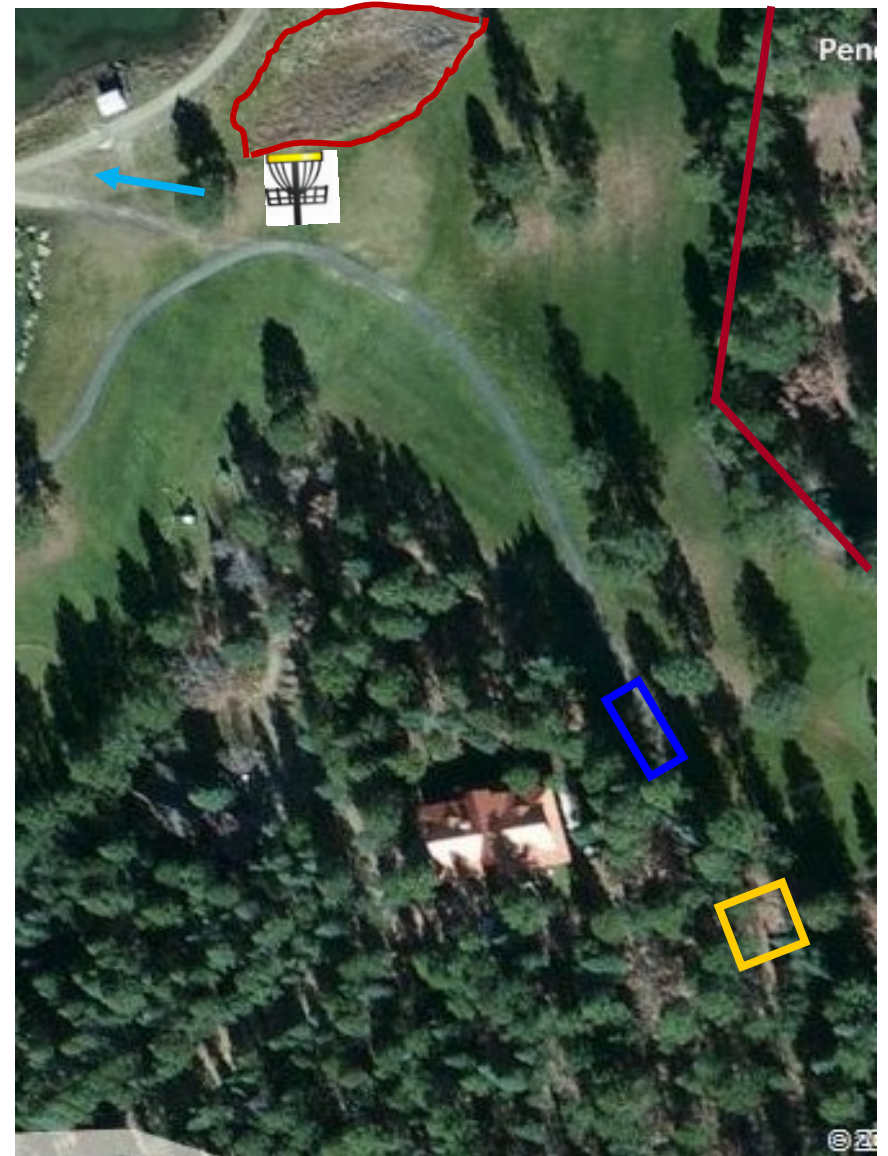
Hole #18 Par 3  
411ft  
303ft

Greens are OB



Hole #17 Par 4  
663ft  
411ft

Cart path and beyond is OB



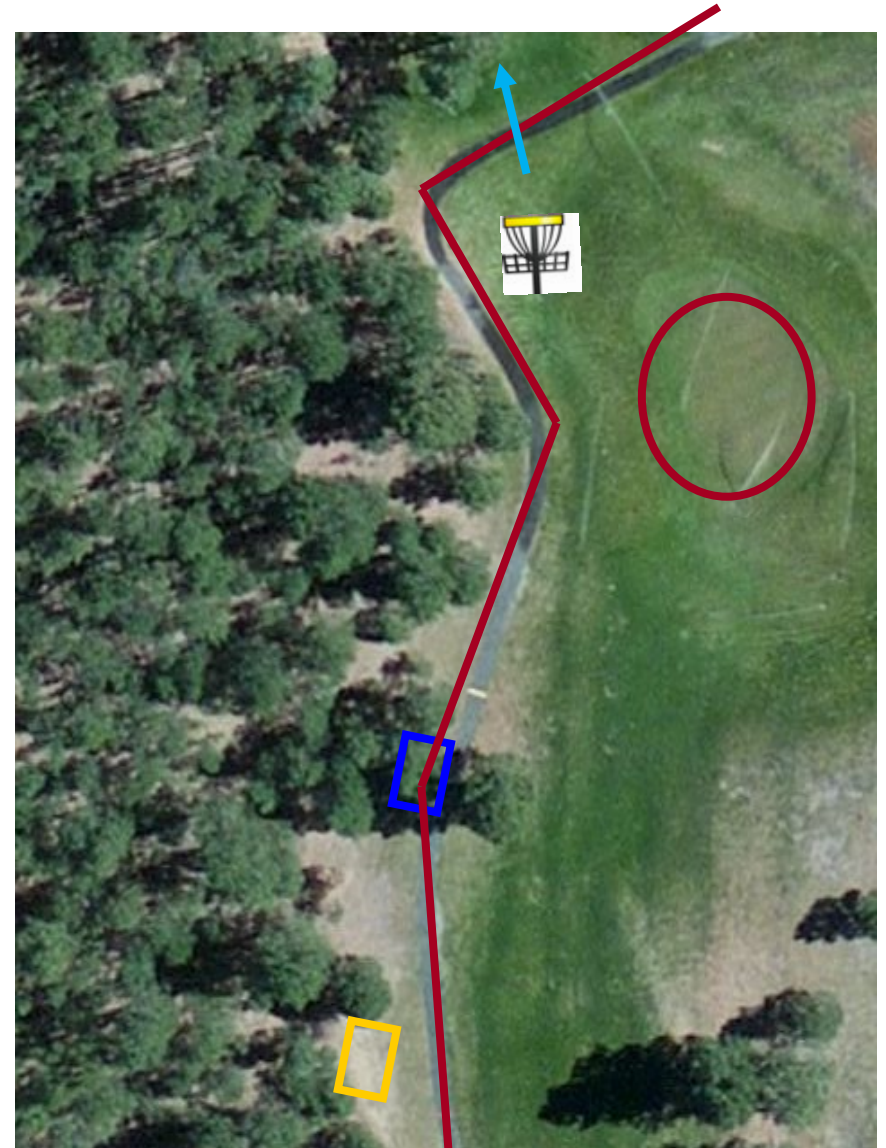
Hole #2 Par 3  
528ft  
405ft

Marsh area marked with string behind basket is OB.



Hole #3 Par 3  
273ft  
135ft

If drive lands in water or in marked OB behind basket, proceed to drop zone located at short tee. Any drive that lands OB from short tee re-tee until you land in bounds. Any subsequent shot that lands in water play from the point it entered the water.



Hole #16 Par 3  
377ft  
265ft

Cart path and beyond is OB. Green is OB

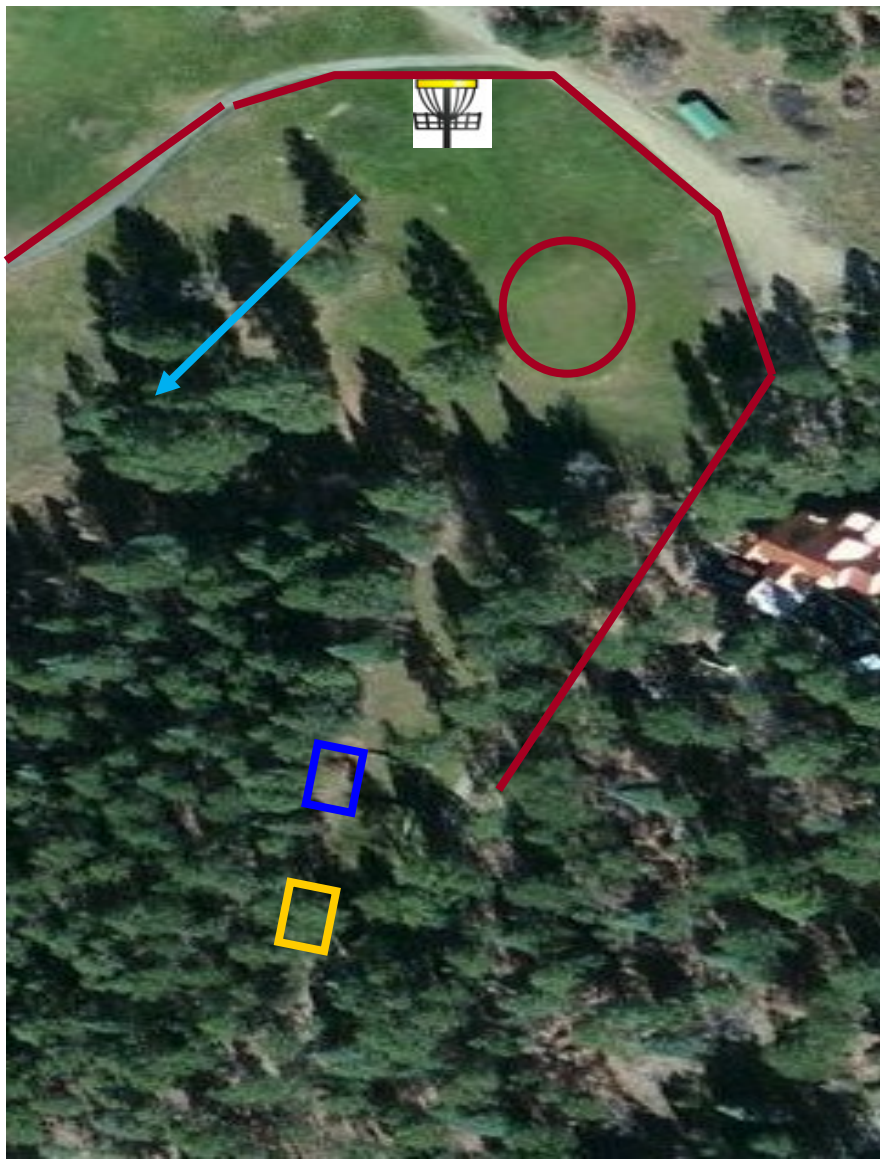


Hole # 15 Par 3  
342ft  
282ft



Hole 4 Par 3  
393ft  
299ft

Cart path and beyond is OB. Green is OB. Drive from long tee must cross in bounds or you must re-tee.



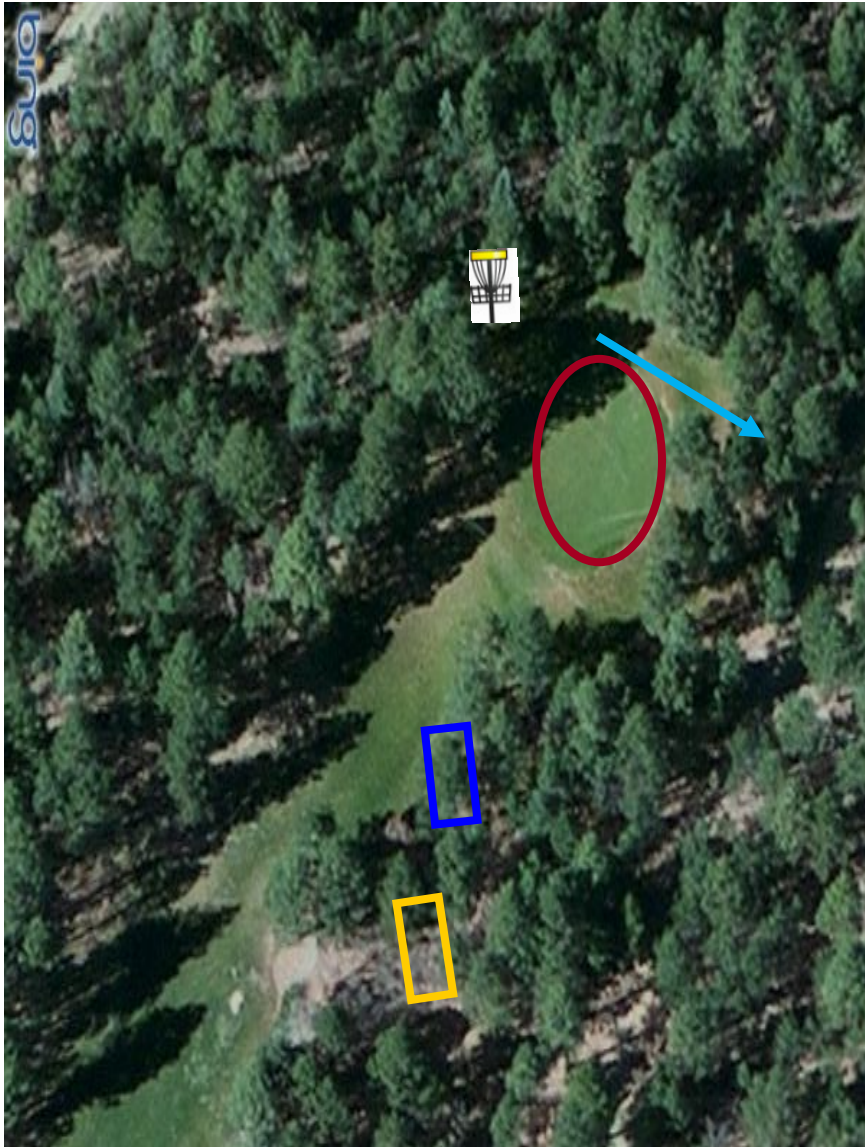
Hole 5 Par 3  
645ft  
427ft

Cart path and beyond is OB. Road is OB. Green is OB.



Hole #14 Par 3  
387ft  
298ft

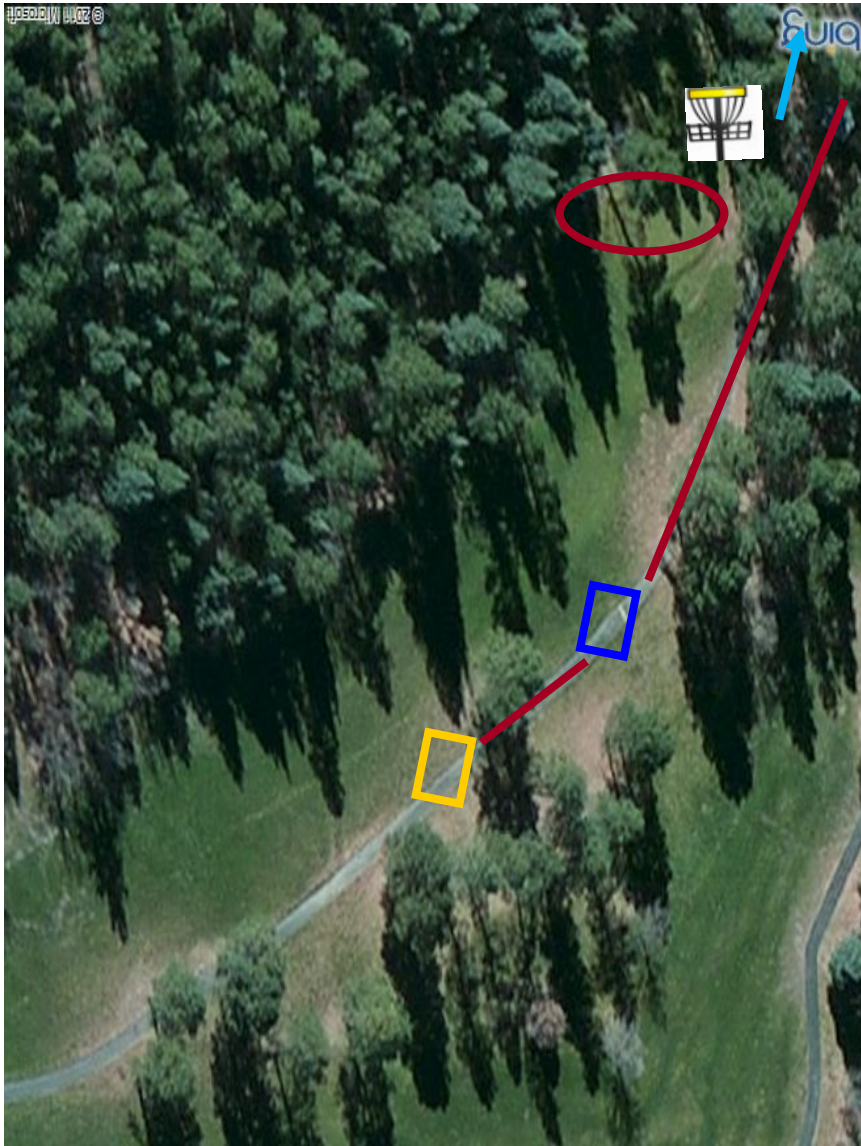
Cart path and beyond is OB.



Hole #13 Par 3  
 336ft  
 228ft  
 Green is OB



Hole #6 Par 3  
 327ft  
 270ft

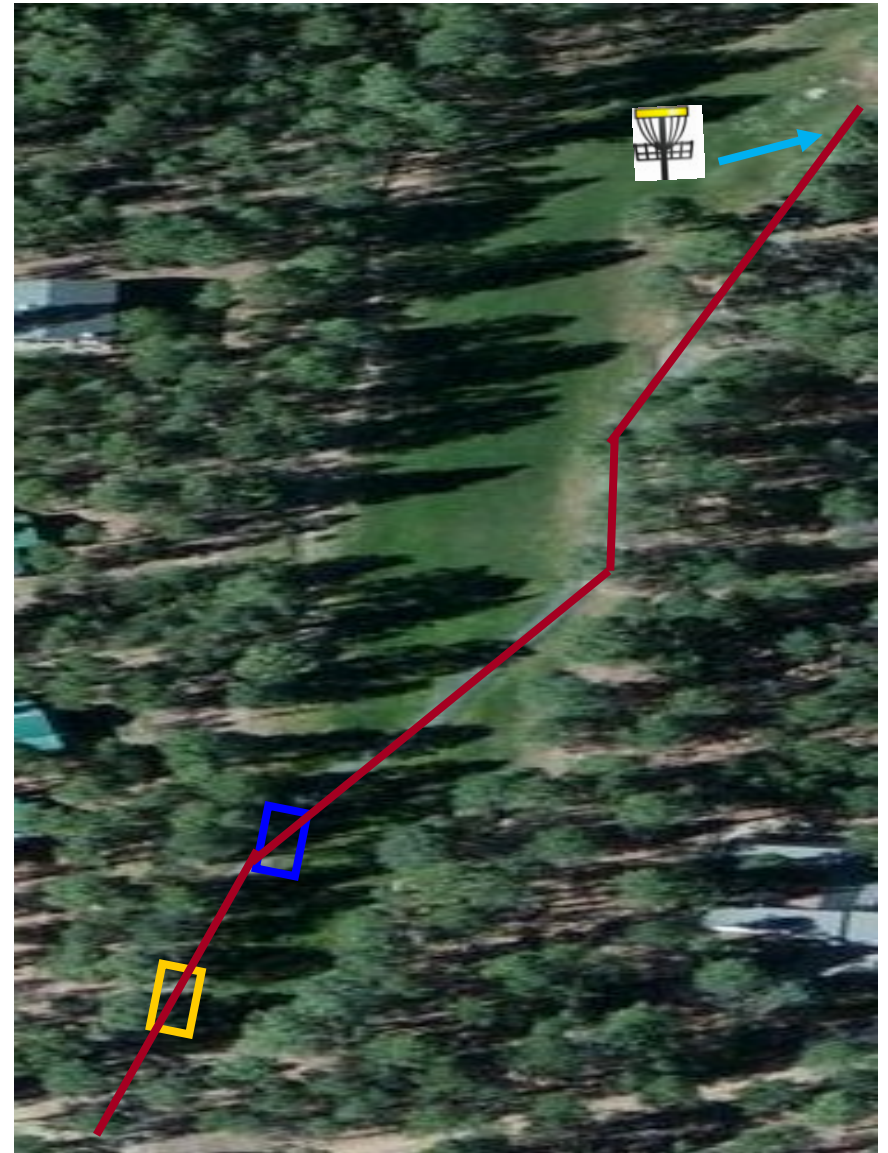


Hole #7 Par 4

605ft

390ft

Cart path and beyond is OB. Green is OB.



Hole #12 Par 4

635ft

519ft

Cart path and beyond is OB. Drive must cross in bounds or you must re-tee.



### Hole #11 Par 3

372ft

288ft

Cart path and beyond is OB. Green is OB. Drive must cross in bounds or you must re-tee.



### Hole #8 Par 5

1218ft

1086ft

Cart path and beyond on both sides of the fairway is OB. Green is OB. Drive must cross in bounds or you must re-tee.



Hole #9 Par 3  
483ft  
381ft

Cart path and beyond is OB



Hole #10 Par 3  
250ft  
193ft