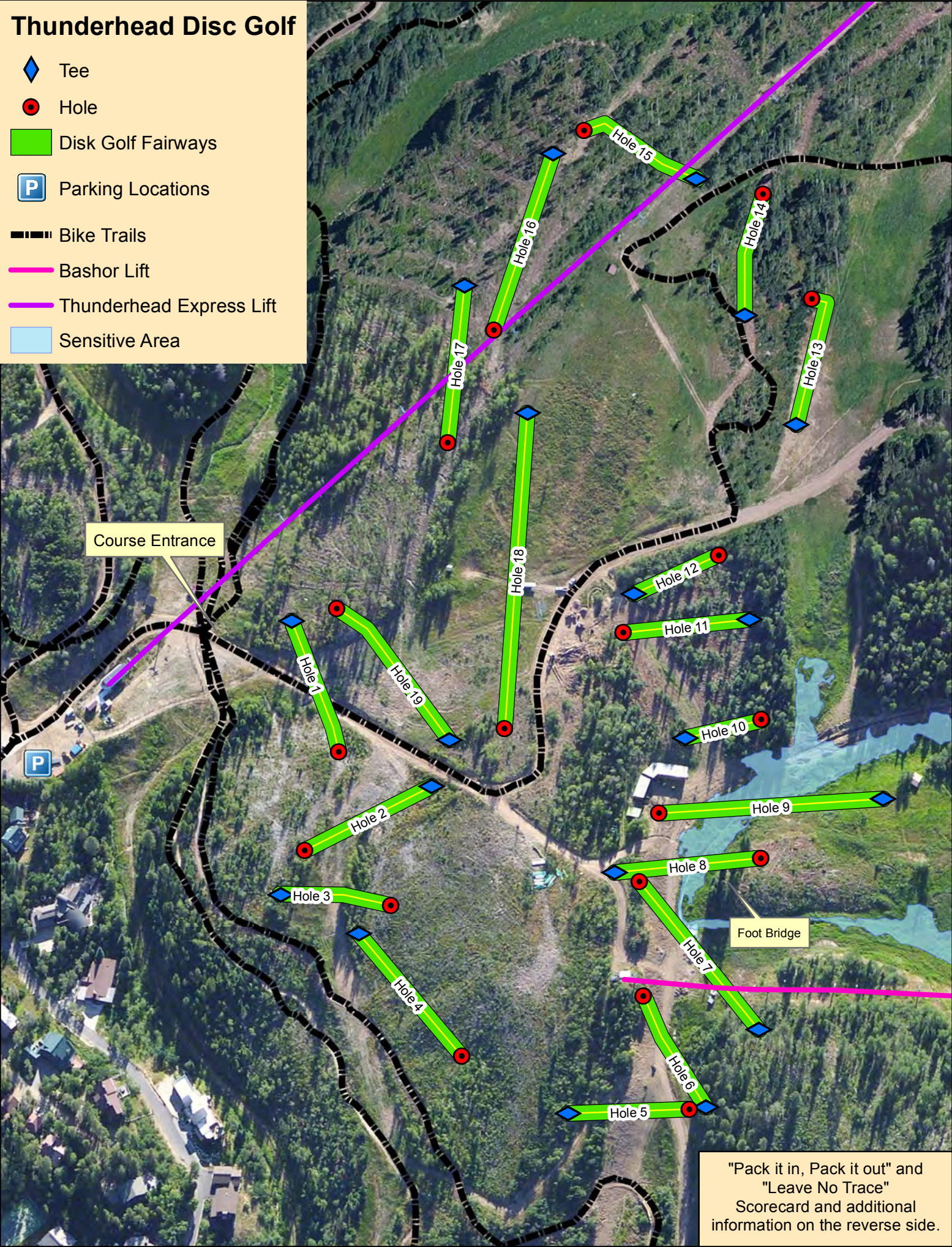
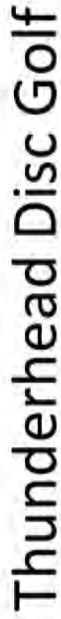


Thunderhead Disc Golf

- ◆ Tee
- Hole
- Disk Golf Fairways
- P Parking Locations
- Bike Trails
- Bashor Lift
- Thunderhead Express Lift
- Sensitive Area



"Pack it in, Pack it out" and
"Leave No Trace"
Scorecard and additional
information on the reverse side.



Hole 10	Par 3 151'	Ace shot through the trees
Hole 11	Par 3 242'	Tree's straight through the canyon of trees.
Hole 12	Par 3 180'	Another Ace shot with a twist
Hole 13	Par 3 270'	Big uphill throw to a large rock and beautiful green
Hole 14	Par 3 236'	One more uphill throw through, then it's all down hill
Hole 15	Par 3 250'	This is an S shot through the trees...look for the windchimes!
Hole 16	Par 3 355'	Farway has big island of trees, go left, go right but don't go straight!
Hole 17	Par 3 308'	Tree's under the Thunderhead lift with small windows to throw through
Hole 18	Par 4 606'	Pull out your big daddy driver and let it rip...road is OBI!
Hole 19	Par 3 334'	Hole is tucked in the trees...don't forget to look back on the way out!

1. The Disc Golf Course is open from dawn to dusk, from approximately mid-June through September and is free to the public.
2. Steamboat Ski & Resort Corporation (SSRC) reserves the right to close the facility for special events, activities and rentals.
3. Any person or group wishing to rent the Course for exclusive use, such as tournaments, must fill out the appropriate application and receive approval from SSRC at least 72 hours prior to the date of rental.
4. Reserving groups are responsible for keeping the course clean and free of vandalism and damage while their event is taking place. Failure to keep the facility clean and free of trash shall result in loss of security deposit and being responsible for replacement costs of damaged items.
5. Being impaired by the use of alcoholic beverages or controlled substances while on the course is prohibited.
6. Please be earth conscious. Do not litter. Pack in, pack out.
7. Respect the mountain and its other users, including hikers, bikers and wildlife, all of which may be encountered at any time.
8. Respect the natural setting of the course and habitat areas. Use the pathways at all times to get from tees and greens. Do not cut through shrub or wooded areas. Do not enter Sensitive Areas on map; use foot bridge to cross.
9. Unless noted otherwise, rules of play shall be under the **Professional Disc Golf Association's Official Rules of Disc Golf**.
10. Please report any problems to the Steamboat Info Center located in the base area or by calling **970-879-6111** or call **970-871-5911** or 9-1-1 in an emergency.

Please be advised that the Disc Golf Course involves strenuous physical activity that may be hazardous to some people due to their physical condition and that outdoor activities, especially those conducted at high altitudes, involve dangers and risks that can lead to serious injury and death. Such dangers and risks include, without limitation, becoming lost or disoriented, rapidly changing weather conditions, exposure to the sun, rain, snow, hail and lightning, hypothermia, dangers caused by other persons engaged in similar activities, the possible occurrence of landslides and flooding, skin irritations and illness due to plants, wildlife encounters, falling trees and limbs and reduced oxygen in the air at high altitude.