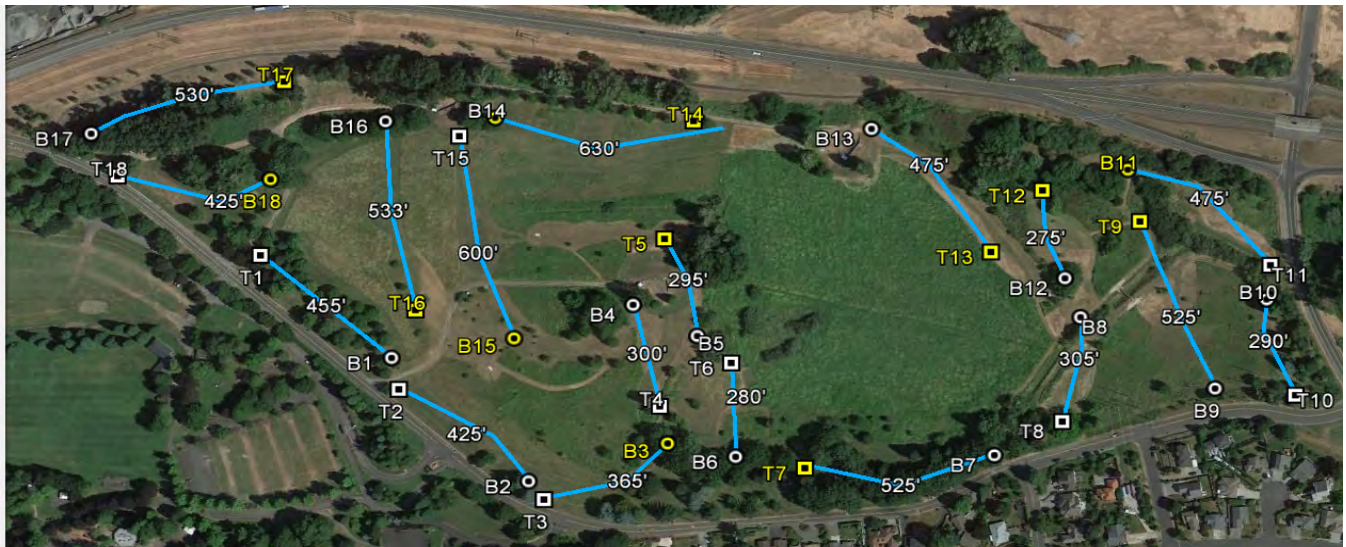


Blue Lake Park - Short



Course	Hole #	Short Tees		Long Tees		Notes
		Length	Par	Length	Par	
Blue Lake Park	1	455	3	455	3	OB: Beyond red stakes marking fairway, or steel cable on right.
Blue Lake Park	2	425	3	425	3	OB: Beyond red stakes marking fairway, or steel cable on right. Mandatory: left of marked tree. Use drop zone if mando is missed.
Blue Lake Park	3	365	3	540	4	OB: Beyond red stakes marking fairway, or or steel cable on right.
Blue Lake Park	4	300	3	300	3	OB: Beyond red stakes marking fairway.
Blue Lake Park	5	295	3	590	4	OB: Beyond red stakes marking fairway. Mandatory: left of marked tree. Use drop zone if mando is missed.
Blue Lake Park	6	280	3	280	3	OB: Beyond red stakes marking fairway.
Blue Lake Park	7	525	4	945	5	OB: Beyond red stakes marking fairway, steel cable on right, or water.
Blue Lake Park	8	265	3	265	3	OB: Beyond red stakes marking fairway, and marked creek.
Blue Lake Park	9	525	4	525	4	OB: Beyond red stakes marking fairway, and marked creek.
Blue Lake Park	10	310	3	310	3	OB: Beyond red stakes marking fairway.
Blue Lake Park	11	475	4	685	4	OB: Beyond red stakes marking fairway.
Blue Lake Park	12	410	3	410	3	OB: Beyond red stakes marking fairway. Note: If your tee shot never crosses in-bounds, proceed, with penalty, to the drop zone.
Blue Lake Park	13	475	4	625	4	OB: Beyond red stakes marking fairway.
Blue Lake Park	14	630	4	910	5	OB: Beyond red stakes marking fairway, or landing within marked "islands" on fairway.
Blue Lake Park	15	600	4	815	4	OB: Beyond red stakes marking fairway.
Blue Lake Park	16	533	4	800	4	OB: Beyond red stakes marking fairway.
Blue Lake Park	17	530	4	950	5	OB: Beyond red stakes marking fairway.
Blue Lake Park	18	425	3	600	4	OB: Beyond red stakes marking fairway, or or steel cable on right.
		7823	62	10,430	68	